

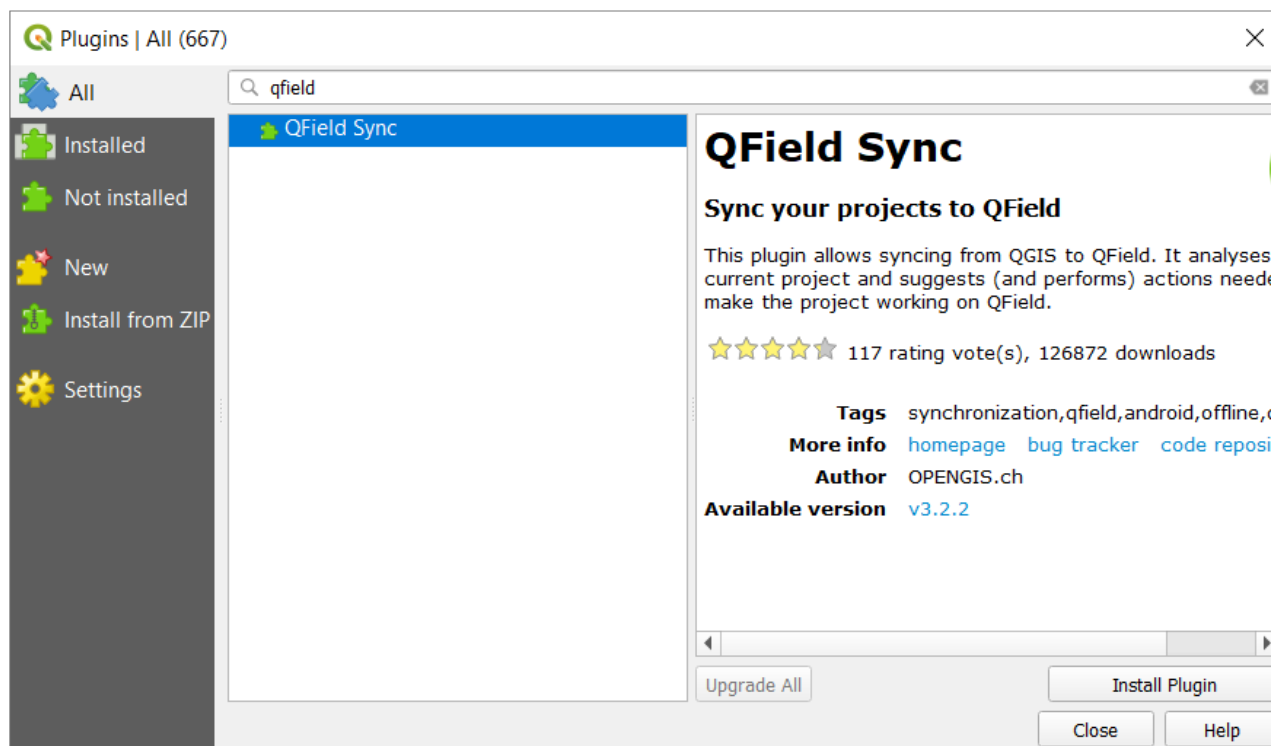
Field data collection using QField

1 Installation of QField

Install QField on your phone from the different app stores for android or iOS.

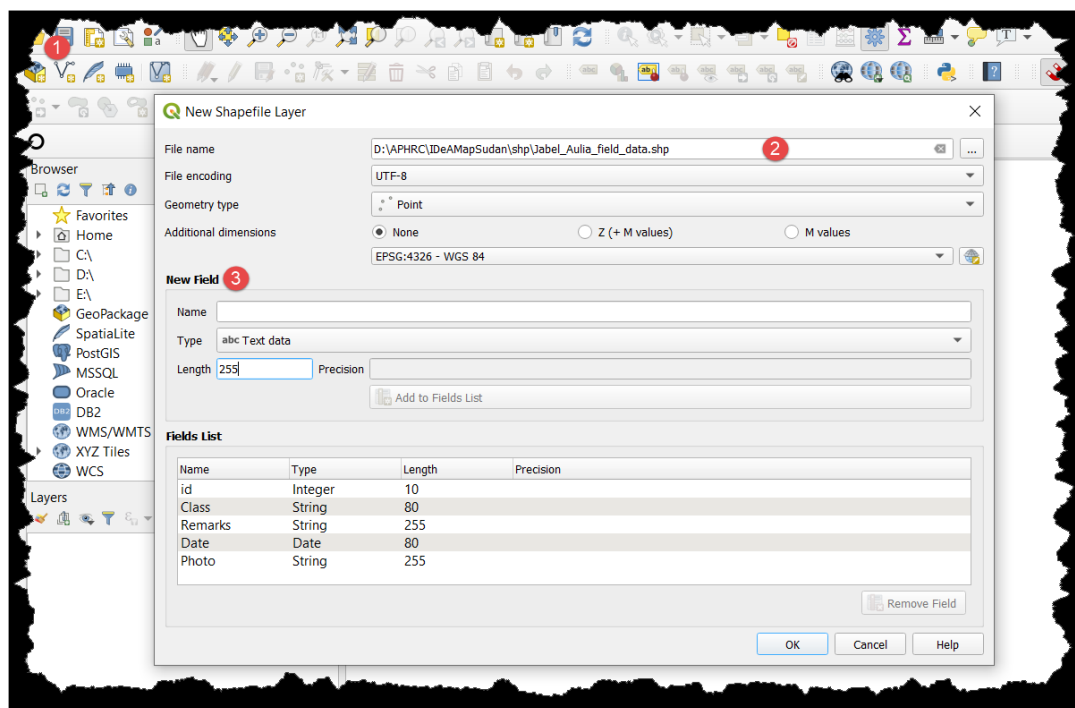
1.1 Installing QField Syc plugin

Go to plugins, search and install QField Sync plugin

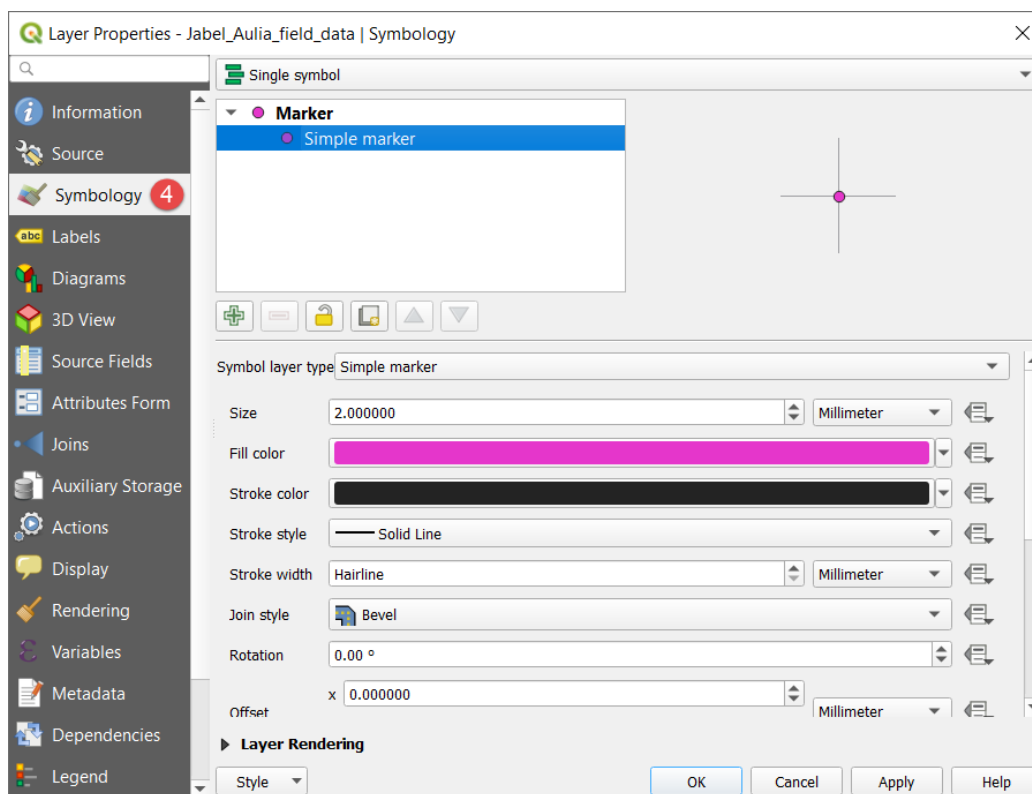


1.2 Setting up the project

- 1) Create a shapefile or GeoPackage layer
- 2) Give it a name xxx.shp
- 3) Create fields that will be used with their respective type and length size, for example; Class, Remarks, Date, Photo.



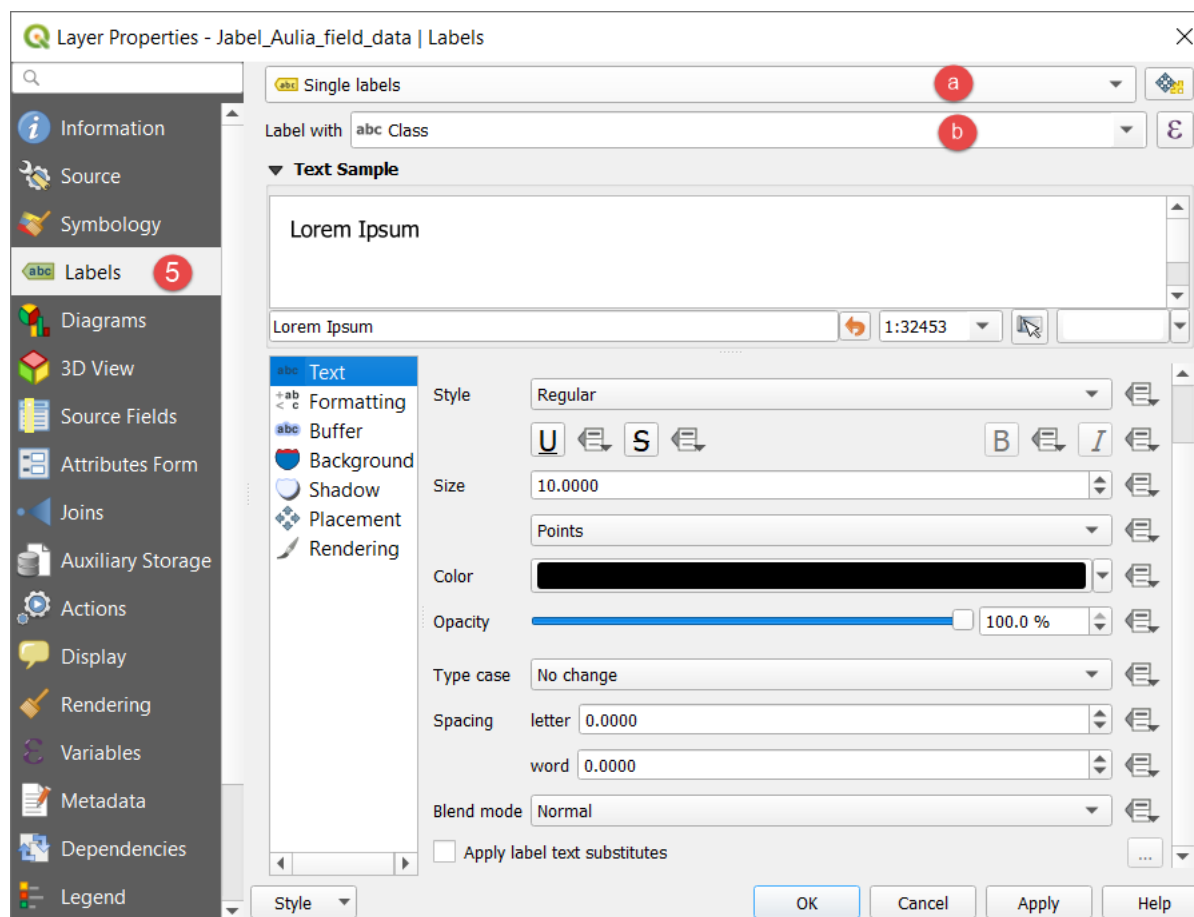
4) Symbology - choose a color for the point symbol that will be easily seen outdoors on the phone



5. Labels – Choose to label with a field for dynamic update when you pick the points

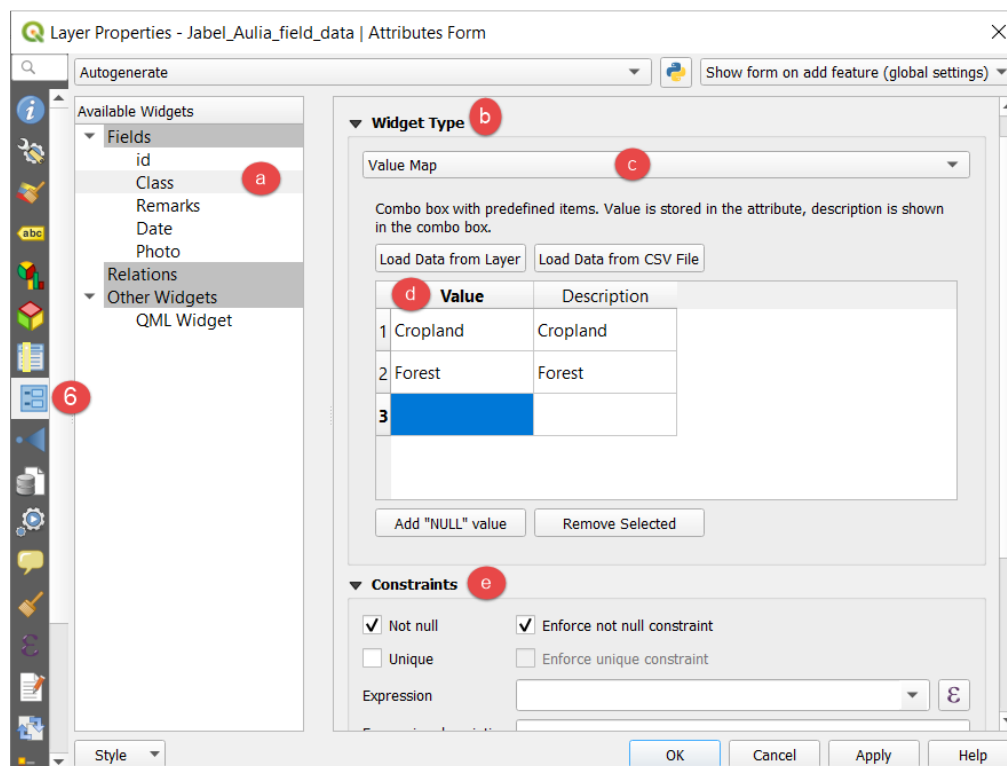
a. Select single labels

b. Select the field you want to use for labels



6. Attribute form – Class

- a. Select Class
- b. Select Widget Type
- c. Choose Value Map and populate the values of the nature of features you want to will collect
can be loaded from layer or csv file
- d. Can be entered manually
- e. To avoid null values, check both the Not Null and Enforce not null constraint



Layer Properties - Jabel_Aulia_field_data | Attributes Form

Autogenerate ▼ Show form on add feature (global settings) ▼

Available Widgets

- Fields
 - id
 - Class **a**
 - Remarks
 - Date
 - Photo
- Relations
- Other Widgets
 - QML Widget

6

Widget Type **b**

Value Map **c**

Combo box with predefined items. Value is stored in the attribute, description is shown in the combo box.

Load Data from Layer Load Data from CSV File

d Value	Description
1	Cropland
2	Forest
3	

Add "NULL" value Remove Selected

Constraints **e**

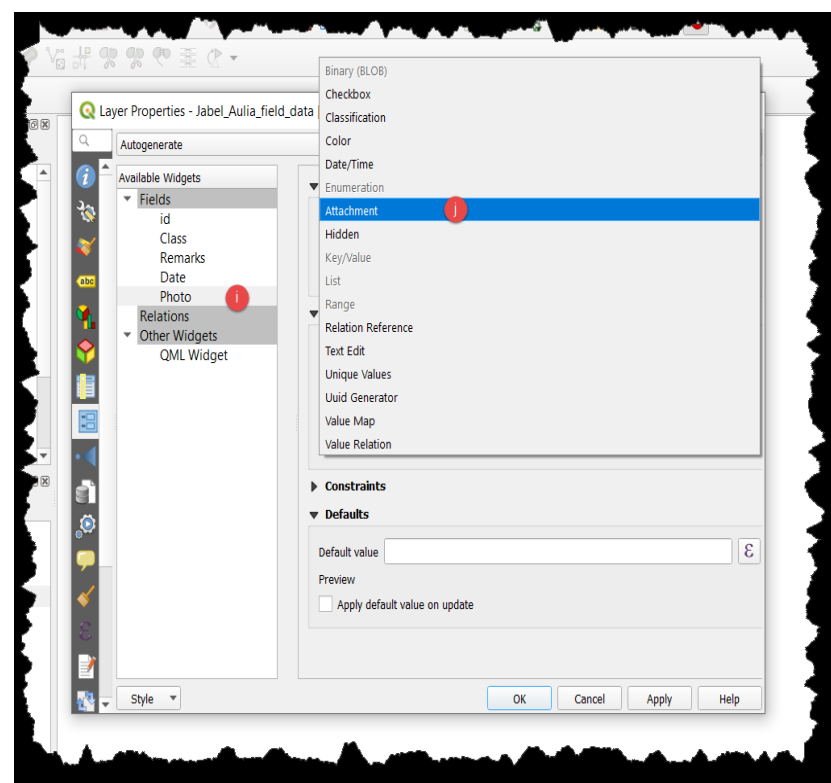
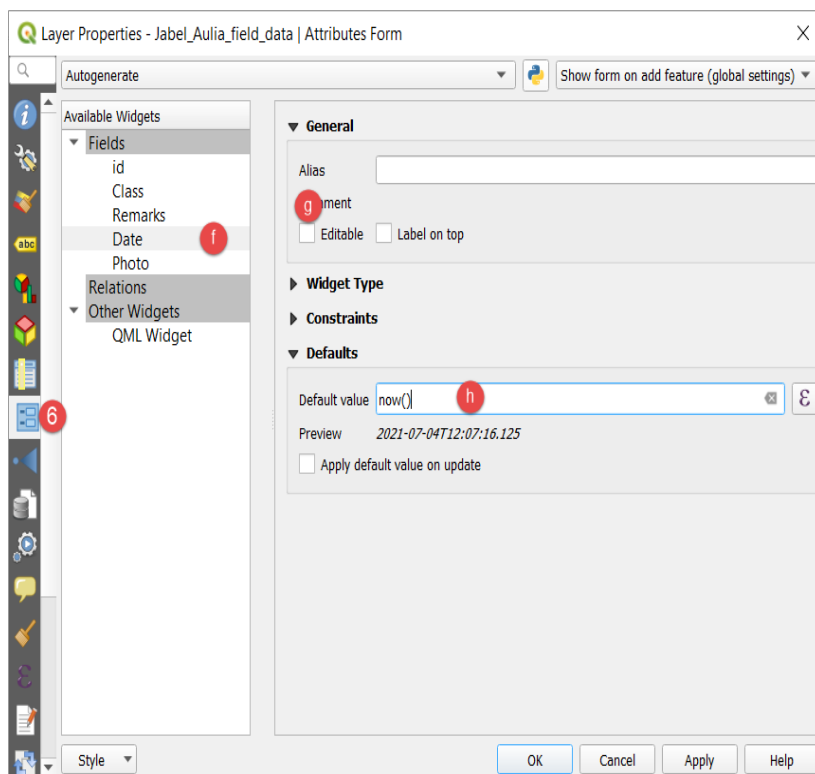
Not null Enforce not null constraint

Unique Enforce unique constraint

Expression ⌵ ⌵

Style ▼ OK Cancel Apply Help

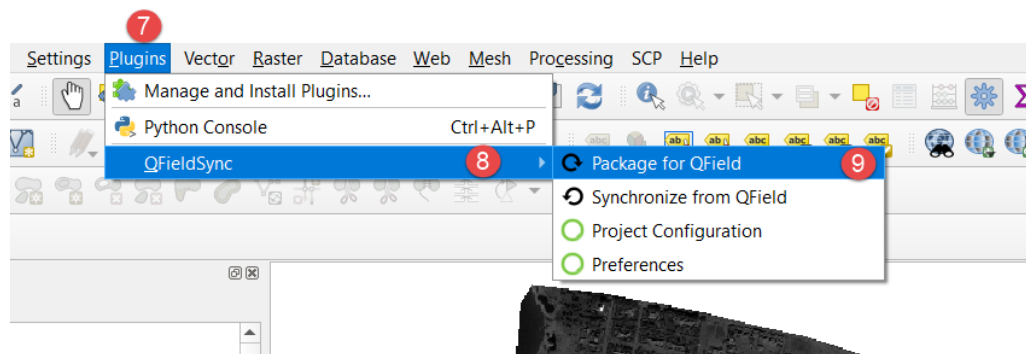
- f. Choose the date
- g. Uncheck for it not to be editable
- h. Type in the phrase “now ()” in the default value section.
- i. Select photo
- j. Under Widget type choose Attachment



7. Go to plugins on the Main menu and download QField

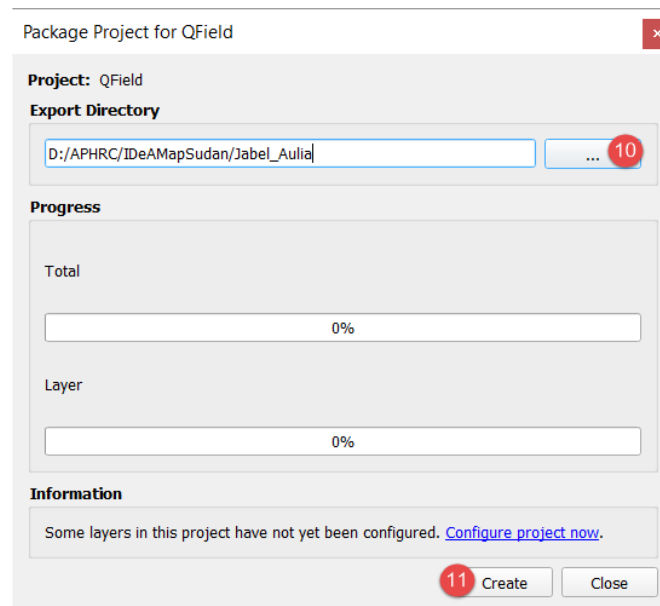
8. Select QFieldSync

9. Select Package for QField



10. Select the folder you are saving the project

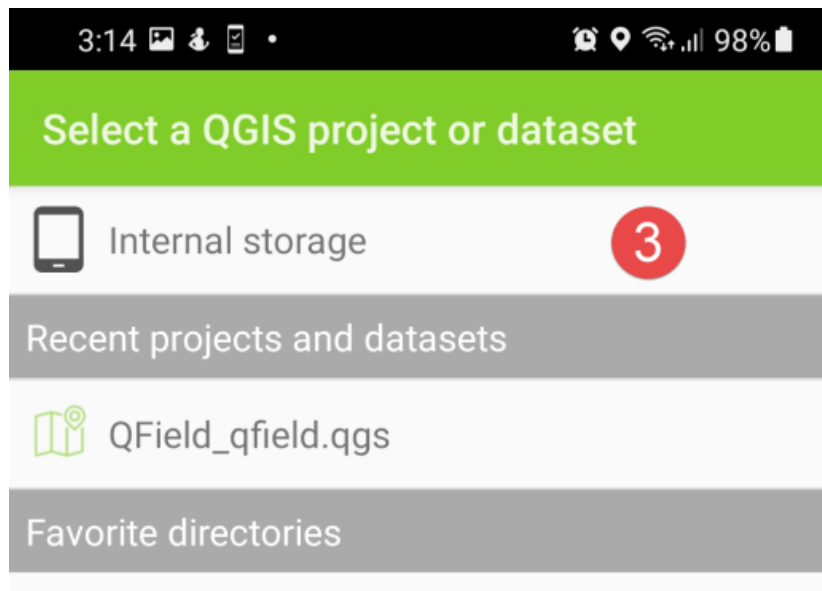
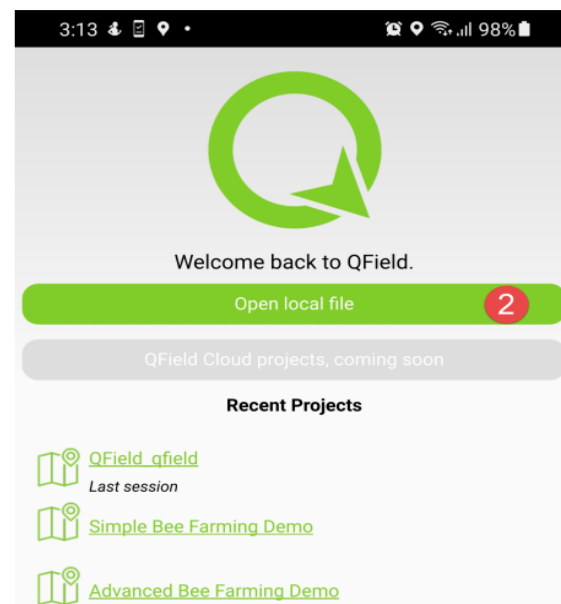
11. Click on Create



1.3 Data collection using QField application

Transfer the folder created from the previous task to your phone

1. Open the QField application
2. Select open local file
3. Select Internal storage and locate where you stored the files from the previous task

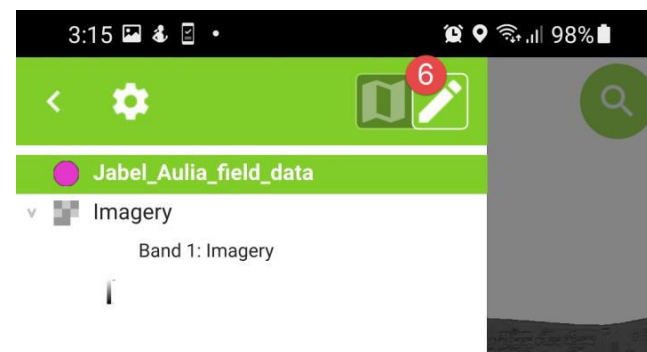


4. Select the file xxx_qfield.qgs file from the folder

5. Select options



6. Activate the edit mode for the shapefile or GeoPackage layer



7. Select + button to add a point

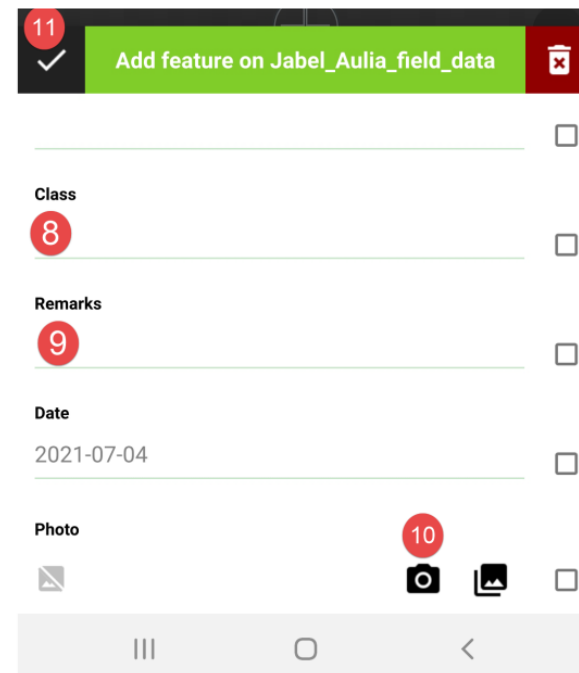


8. Fill in the class

9. Fill in the remarks if necessary

10. Take a photo and save it as an attachment

11. Save the edits

A screenshot of the IDEA MAP SUDAN mobile application interface. The top bar is green with a white checkmark icon on the left, the text "Add feature on Jabel_Aulia_field_data" in the center, and a red trash can icon on the right. Below the bar are several input fields, each with a red circle containing a number indicating the step: "Class" (8), "Remarks" (9), "Date" (2021-07-04), and "Photo" (10). The "Photo" field has a camera icon and a gallery icon. At the bottom, there is a navigation bar with three icons: a hamburger menu, a home button, and a back arrow.